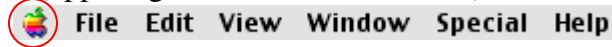


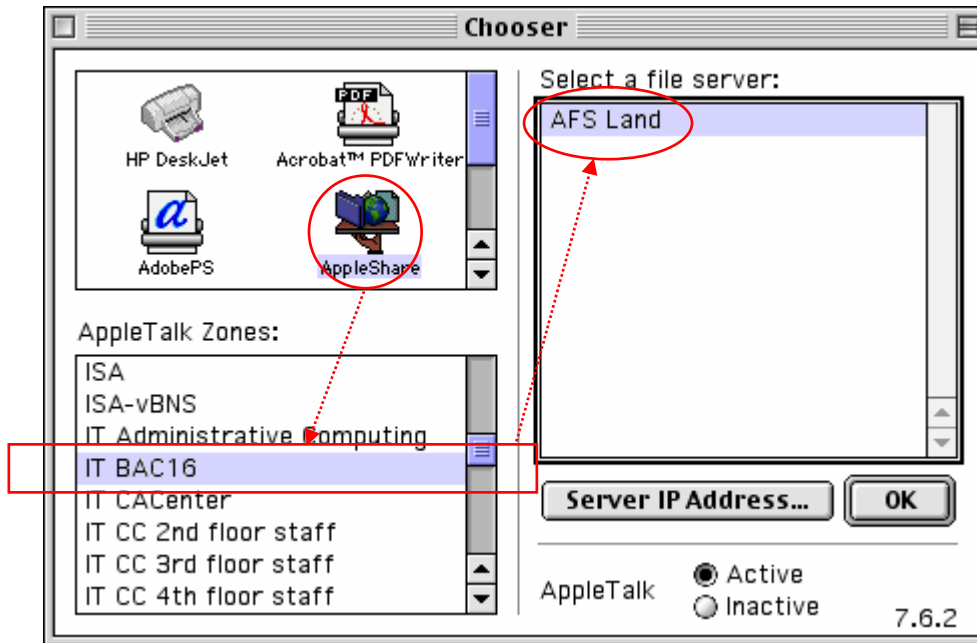
Accessing your AFS space from a Macintosh computer on campus

The following instructions will help you set up the equivalent of an “M Drive” on the Mac desktop.

1. Click on the **Apple icon** (upper right hand corner of screen) then on **Chooser**.



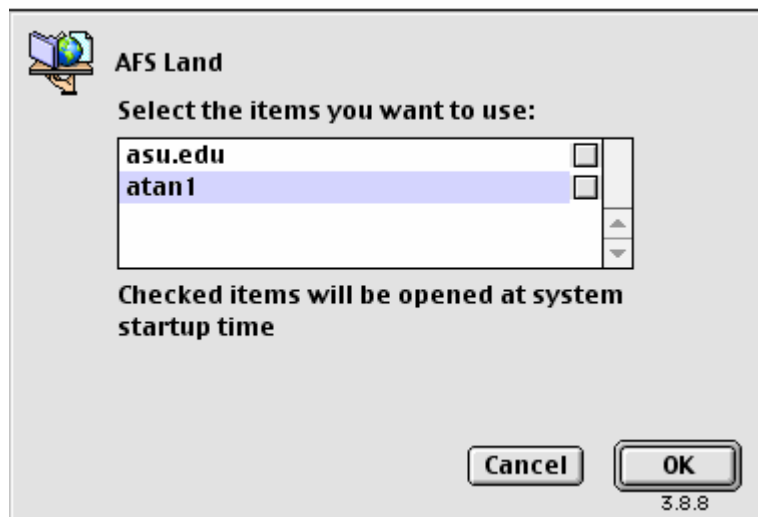
2. In the Chooser window, click on **AppleShare**, then chose **ITBAC16** in the list of AppleTalk zones. Double click on **AFS Land** in the server list.



3. In the dialog box that appears, type in your **ASURITE ID** and **password**.



4. At the next prompt, select your ASURITE ID.



5. An icon drive.



will appear on the Desktop. Double click on it and use it like a hard

6. **Important:** Drag this icon into the **Trash** before you leave! **If you do not do this, the next user will be able to access your AFS space.**

If you have any questions, please contact ashley.tan@asu.edu.

For distribution to EDT455 (Dreamweaver 4) Spring 2002 students only!